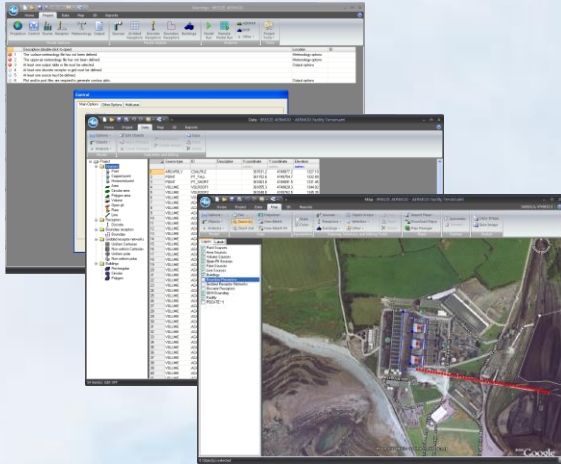
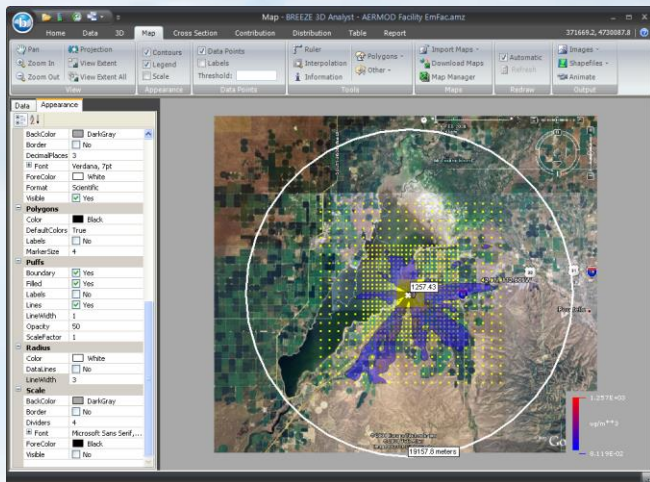


BREEZE AERMOD/ISC



- > EPA promulgated regulatory dispersion model for near-field (<50 km)
- > Suitable for continuous, neutrally- or positively-buoyant plumes
- > Active development by EPA/Academia/Industry Workgroups: 5 new versions in 2 years
- > Geared towards EPA regulatory practices/standards (e.g. automatically processes NO₂/SO₂ results to match EPA 1-hour daily maximum format of NAAQS standards)
- > BREEZE version offers usability enhancements (e.g. ability to import/georeference images, AutoCAD DXFs, and GIS shapefiles)
- > Uses 3DAnalyst for post-processing and graphical display of results
- > BREEZE Parallel version allows faster completion of jobs



<http://www.breeze-software.com/AERMOD/>